
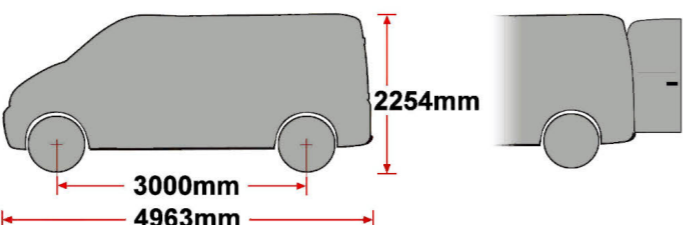
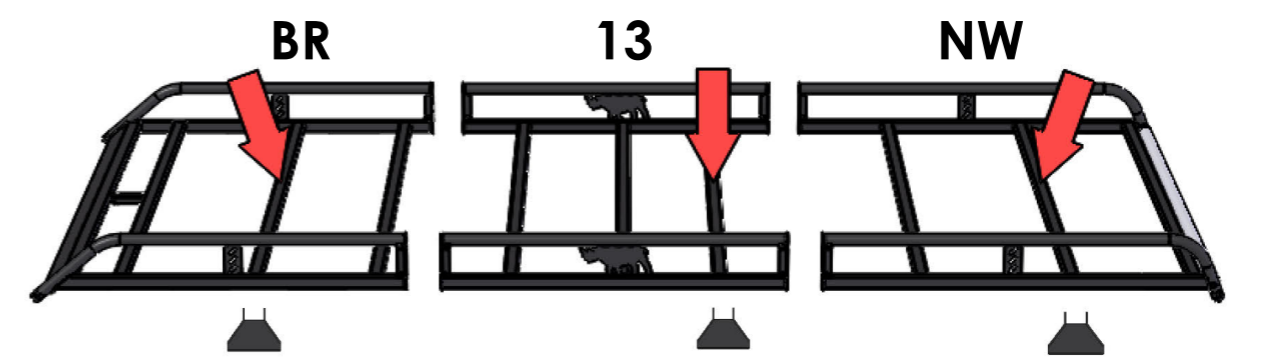
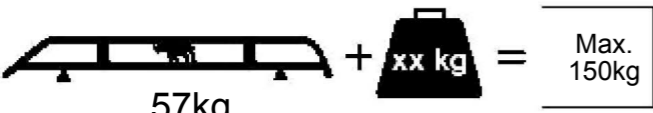
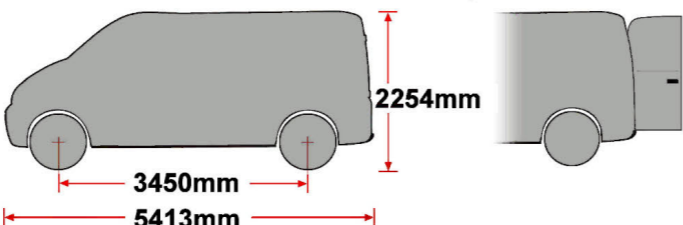
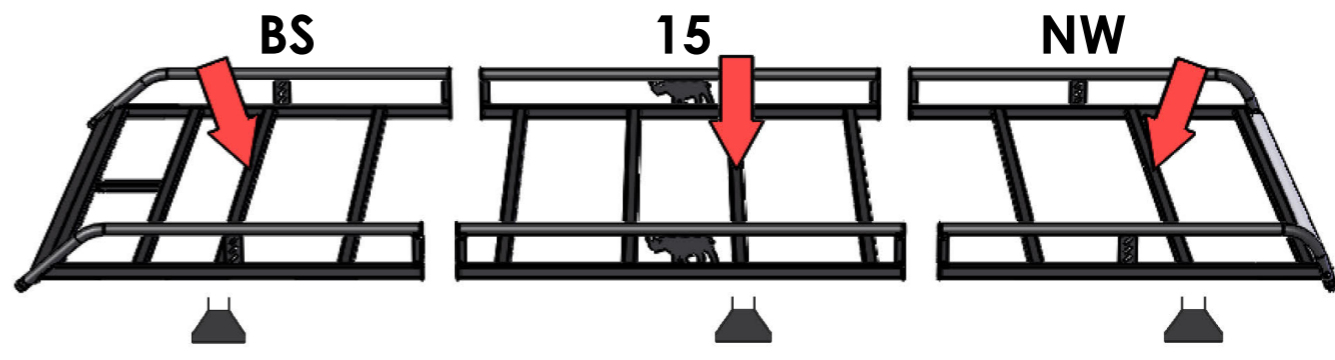

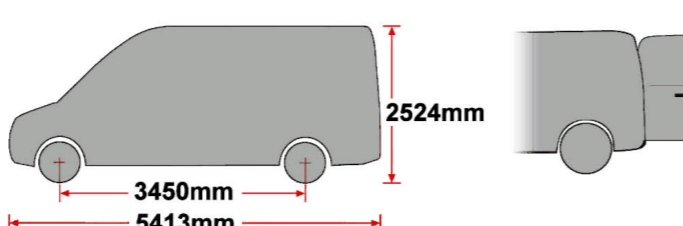
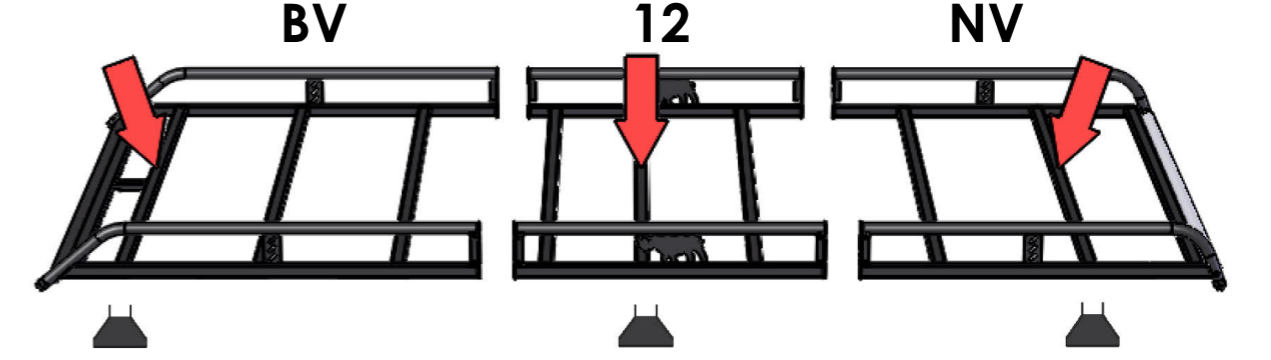
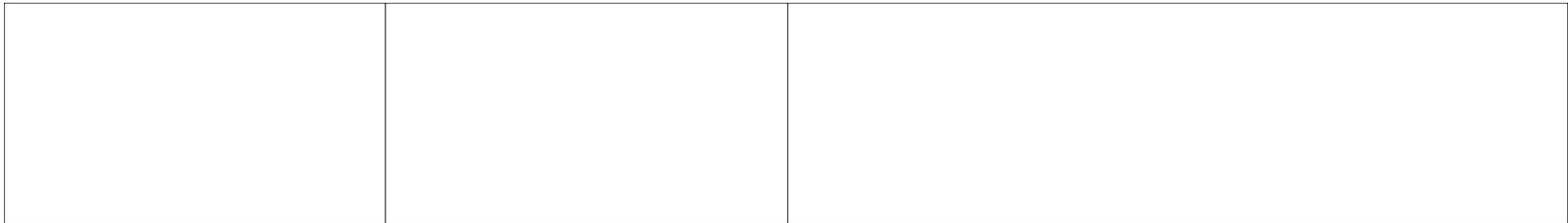
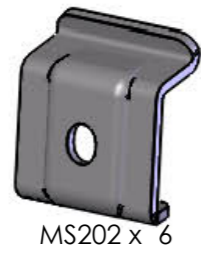
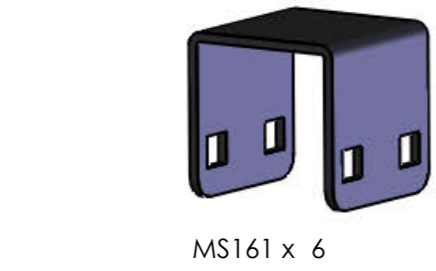


<h2 style="text-align: center;">EU/R 545</h2>  <p style="text-align: center;">52kg + xx kg = Max. 150kg</p>	<p style="text-align: center;"><b>JUMPER/BOXER/DUCATO/RELAY 2002-SWB, LOW ROOF, TWIN DOORS</b></p>  <p style="text-align: center;">2254mm 3000mm 4963mm</p>	 <p style="text-align: center;"><b>BR      13      NW</b></p>
--	---	--

<h2 style="text-align: center;">EU/R 546</h2>  <p style="text-align: center;">57kg + xx kg = Max. 150kg</p>	<p style="text-align: center;"><b>JUMPER/BOXER/DUCATO/RELAY 2002-MWB, LOW ROOF, TWIN DOORS</b></p>  <p style="text-align: center;">2254mm 3450mm 5413mm</p>	 <p style="text-align: center;"><b>BS      15      NW</b></p>
---	--	---

<h2 style="text-align: center;">EU/R 547</h2>  <p style="text-align: center;">52kg + xx kg = Max. 150kg</p>	<p style="text-align: center;"><b>JUMPER/BOXER/DUCATO/RELAY 2002-MWB, HIGH ROOF, TWIN DOORS</b></p>  <p style="text-align: center;">2524mm 3450mm 5413mm</p>	 <p style="text-align: center;"><b>BV      12      NV</b></p>
--	--	--

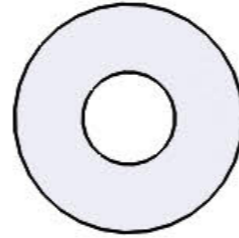




(1:1)



FB003 (M8 x 65) x 12



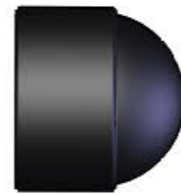
FW002 (M8) x 40



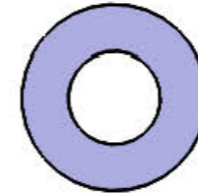
FN006 (M8) x 26



FS035 (M8 x 40) x 6



PS065 (M8) x 6



FW021 (M8) x 12



FS015 (M8 x 25) x 8

