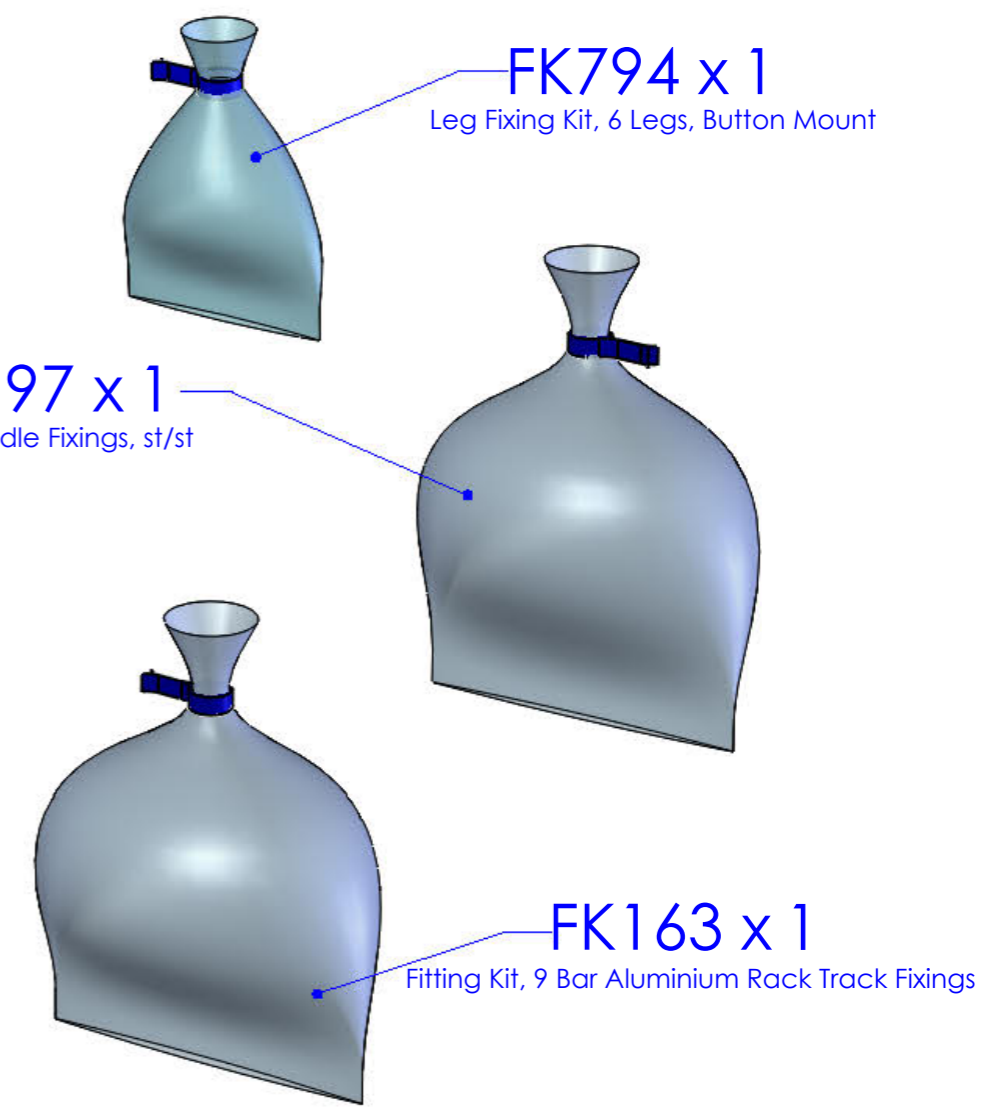
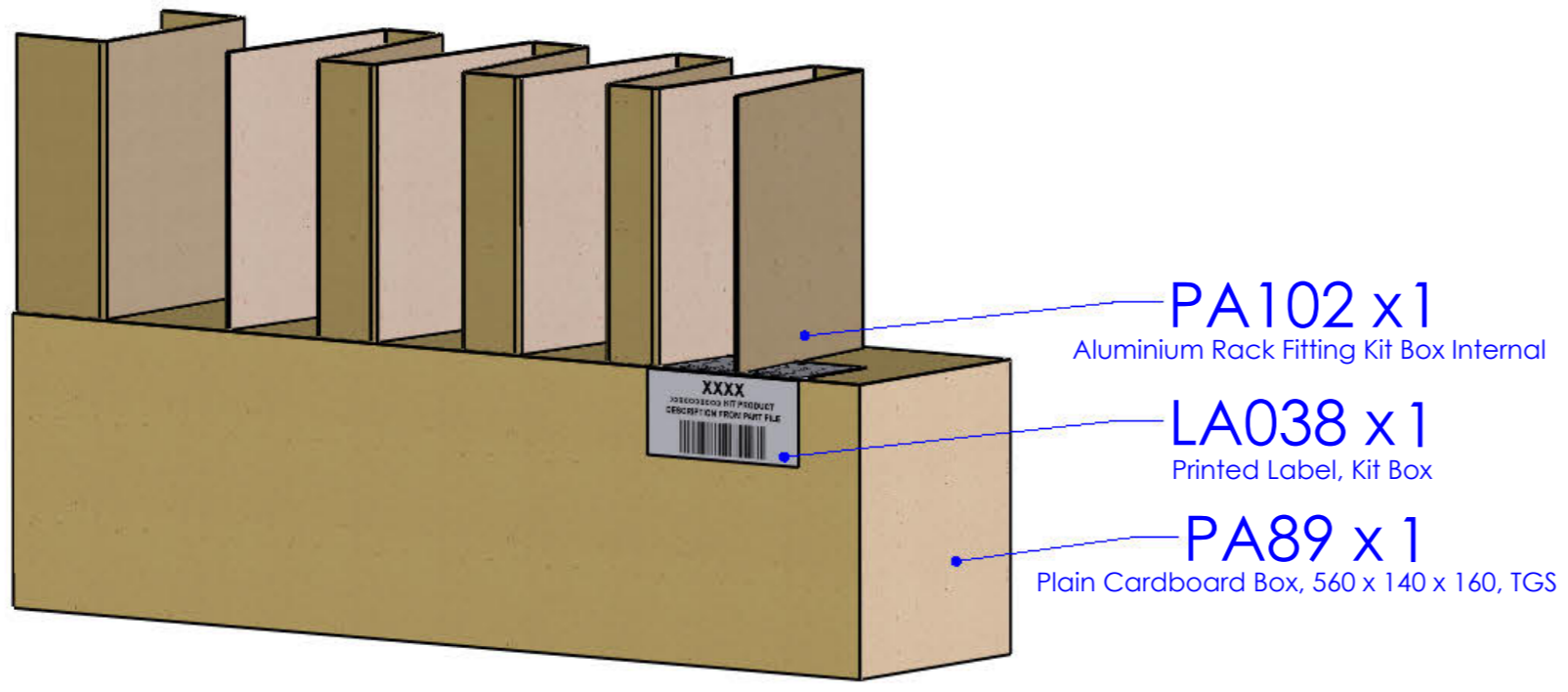


ISSUE:	DRAWN BY:	CHECKED BY:	CRF NO:	DATE:	DESCRIPTION:
e			0764		
f	JW	KB	0764	05/11/13	
g	CH	KB	1075	01/06/15	Added lubrication symbol to customer instructions
h	CH	KB	1146	08/10/15	Updated to show A546 reduced to 3.2m



Notes: 1. First pack Integral Bolt Kit into Plastic Bag, then pack this Bag with the main Kit (Cardboard Box).
 2. Fold Printed Label along edge of Kit Box.
 3. Put through heat tunnel.

DRAWING NO: IA3A (1 of 7)	DESCRIPTION: "IA" 6 Leg Fitting Kit, Aluminium Rack	DESIGNED BY: M. Davies 19/07/11
MATERIAL SIZE: n/a	MATERIAL SPEC: n/a	WEIGHT: 4.75Kg
© NOTE: This drawing is the property of Rhino Products Ltd and must not be used or copied without written consent. The Rhino Products name and logo must remain clearly visible in any reproduction.		

THIRD ANGLE PROJECTION

UNLESS OTHERWISE SPECIFIED:
DIMENSIONS ARE IN MM

0.00	0.2
0.0	0.5
ANG	0.5°

DERIVED DIMENSIONS SHOWN IN BRACKETS

DEBURR AND BREAK ALL SHARP EDGES

SHEET SIZE A3 SHEET SCALE: 2:8

A545

**JUMPER/RELAY/BOXER/DUCATO
2002-
L1, H1, TWIN DOORS**

44kg + **xx kg** =

Max.
150kg

A546

**JUMPER/RELAY/BOXER/DUCATO
2002-
L2, H1, TWIN DOORS**

44kg + **xx kg** =

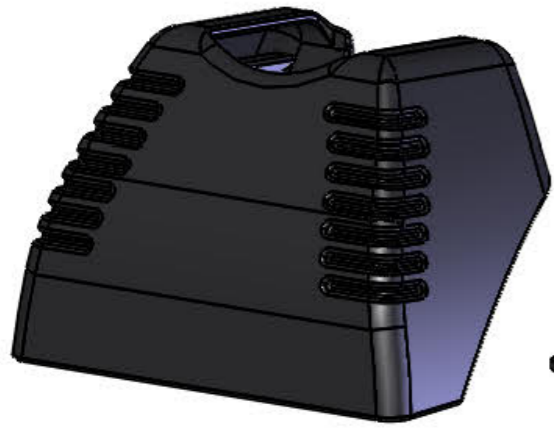
Max.
150kg

A547

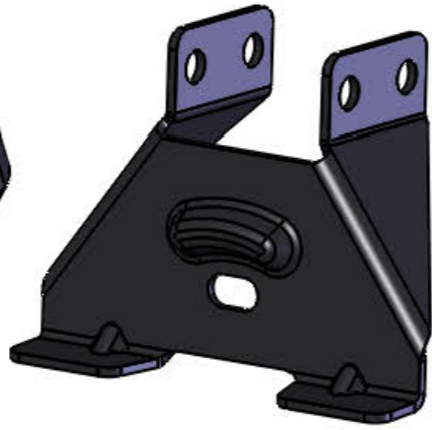
**JUMPER/RELAY/BOXER/DUCATO
2002-
L2, H2, TWIN DOORS**

44kg + **xx kg** =

Max.
150kg



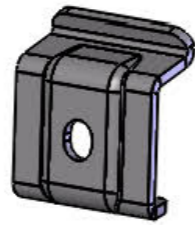
PS095 x 6



MS170 x 6



EXT09-004 x 6



MS202 x 6



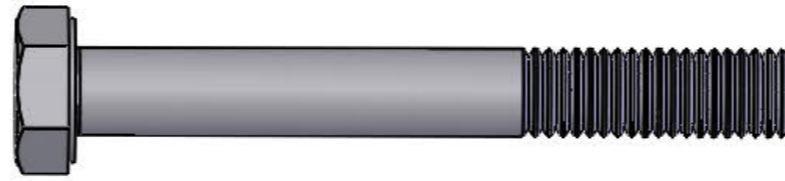
PS089 x 1



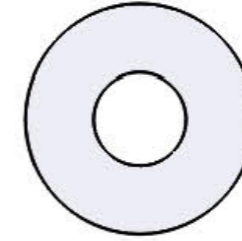
PS090 x 1



PS047 x 6



FB012 (M8 x 65) x 12

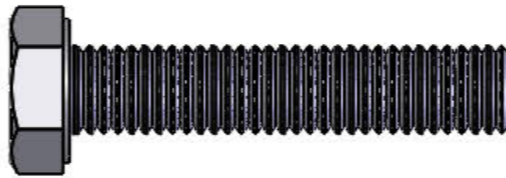


FW002 (M8) x 24

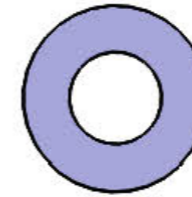


FN006 (M8) x 18

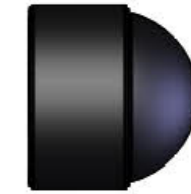
(1:1)



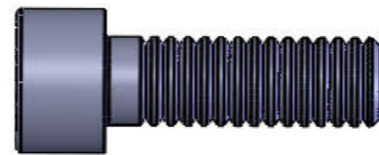
FS066 (M8 x 40) x 6



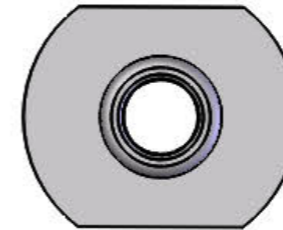
FW021 (M8) x 12



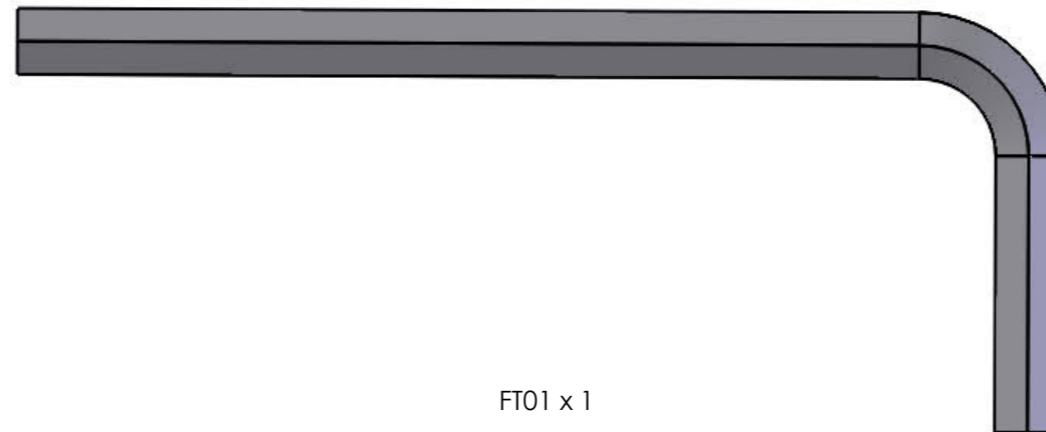
PS065 (M8) x 6



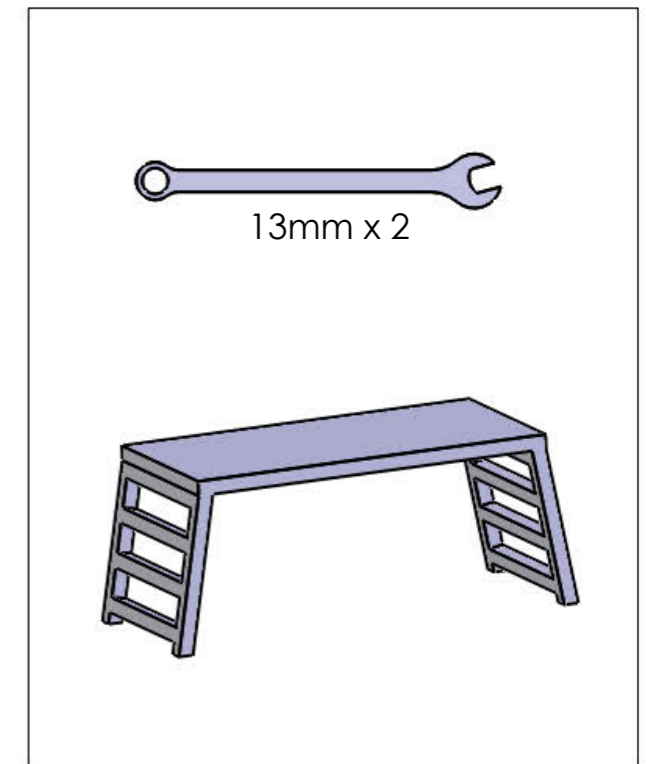
FS059 (M8 x 25) x 22



FN023 (M8) x 22



FT01 x 1



13mm x 2

