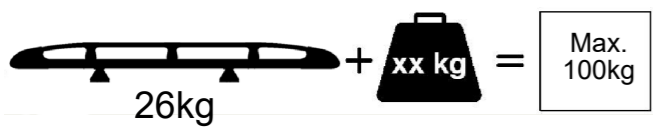
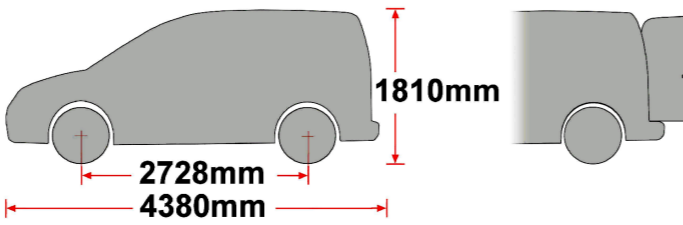
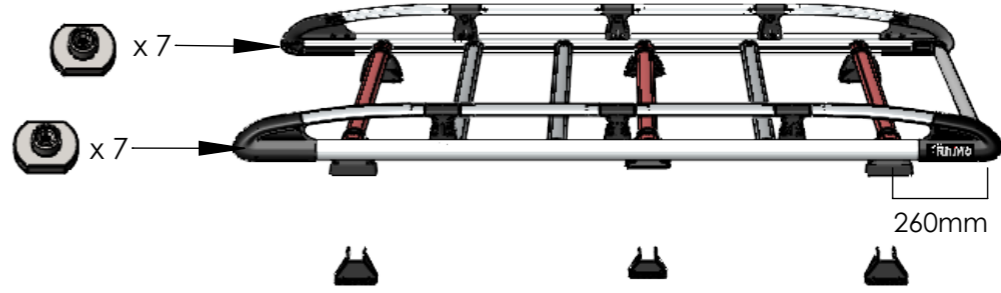

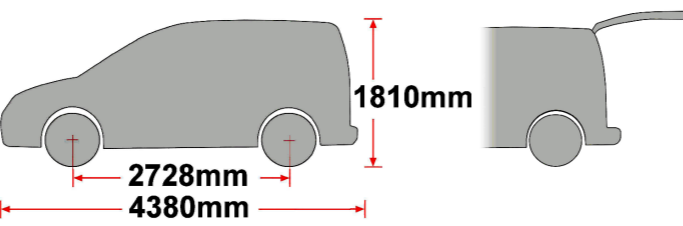
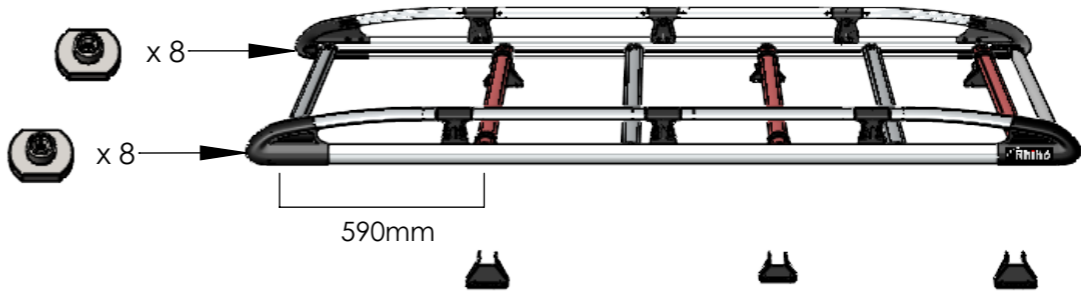

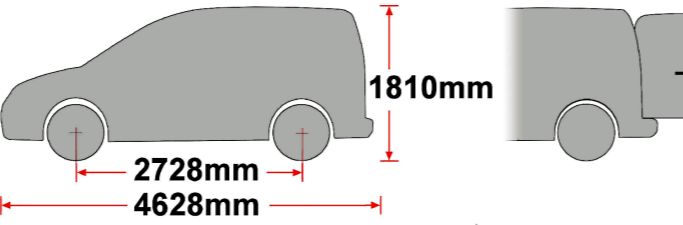
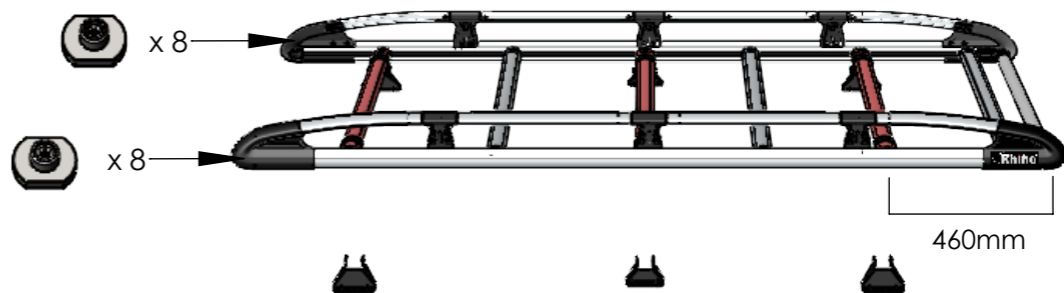
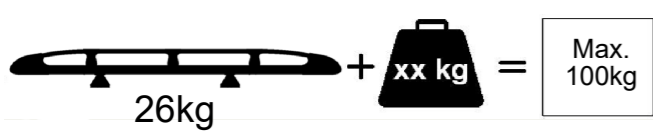
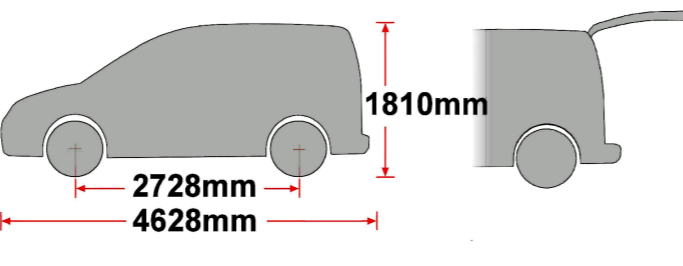
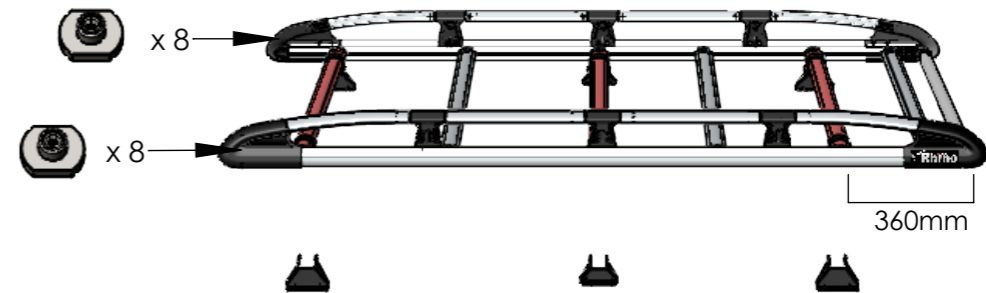


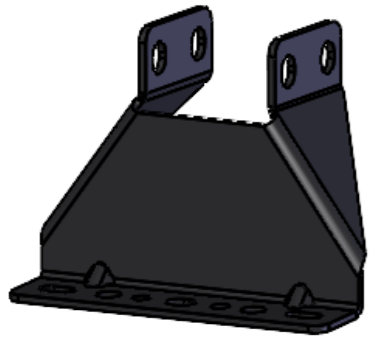
ALUMINIUM RACK - TYPE DESIGNATION FORM I

<p>AH590</p>  <p>26kg + xx kg = Max. 100kg</p>	<p>BERLINGO/PARTNER 2008-L1, H1, TWIN DOORS</p>  <p>1810mm 2728mm 4380mm</p>	 <p>x7 x7 260mm</p>
--	---	--

<p>AH592</p>  <p>27kg + xx kg = Max. 100kg</p>	<p>BERLINGO/PARTNER 2008-L1, H1, TAILGATE</p>  <p>1810mm 2728mm 4380mm</p>	 <p>x8 x8 590mm</p>
---	--	--

<p>AH591</p>  <p>27kg + xx kg = Max. 100kg</p>	<p>BERLINGO/PARTNER 2008-L2, H1, TWIN DOORS</p>  <p>1810mm 2728mm 4628mm</p>	 <p>x8 x8 460mm</p>
--	---	--

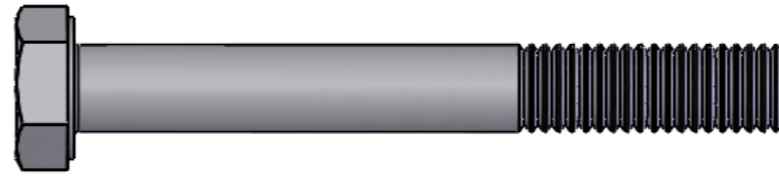
<p>AH593</p>  <p>26kg + xx kg = Max. 100kg</p>	<p>BERLINGO/PARTNER 2008-L2, H1, TAILGATE</p>  <p>1810mm 2728mm 4628mm</p>	 <p>x8 x8 360mm</p>
--	---	--



MS168 x 4

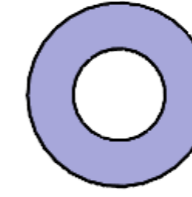


EXT09-004 x 6



FB012 (M8 x 65) x 12

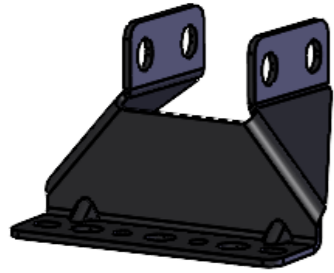
(1:1)



FW037 (M8) x 24



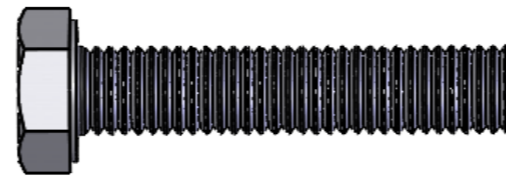
FN006 (M8) x 12



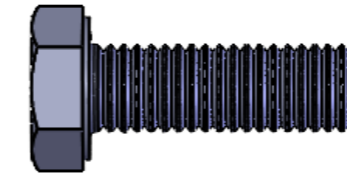
MS176 x 2



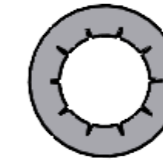
PS089 x 1



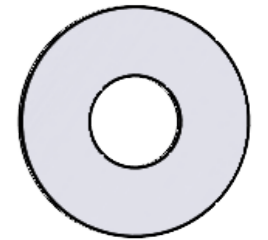
FS066 (M8 x 40) x 2



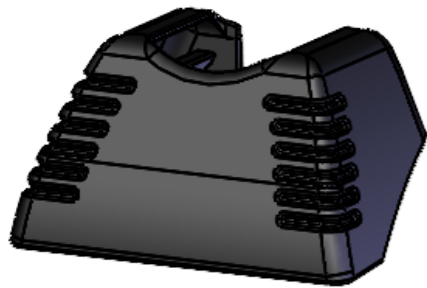
FS062 (M8 x 25) x 4



FW009 (M8) x 6



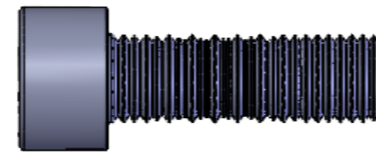
FW002 (M8) x 6



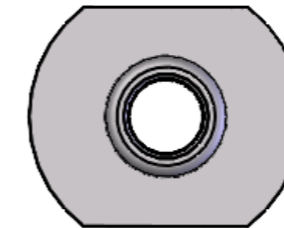
PS096 x 2



PS090 x 1



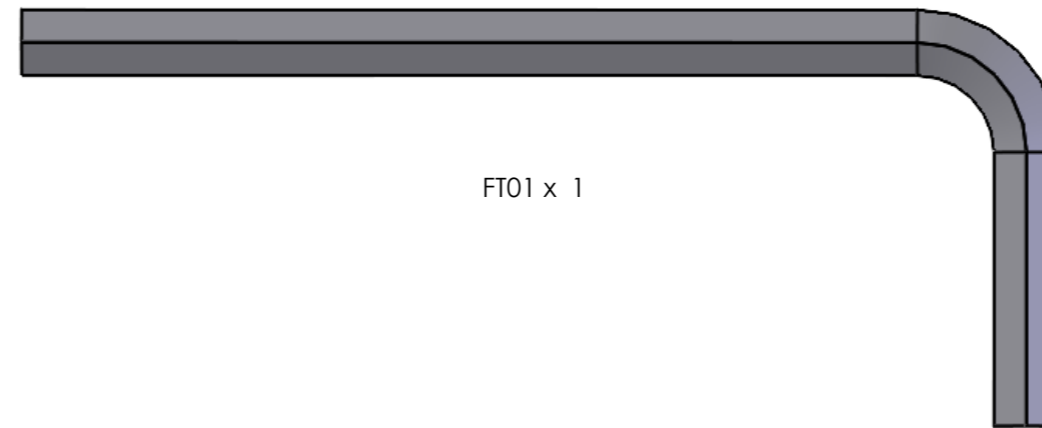
FS059 (M8 x 25) x 16



FN023 (M8) x 16



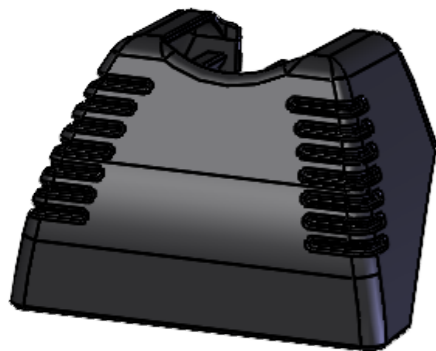
PS053 x 2



FT01 x 1



13mm x 2



PS095 x 4



PS047 x 4

